

*aquaplan*

Via del Chisso n° 4 - 21052 BUSTO ARSIZIO (VA)  
P.I. : 01778290120

tel/fax 0331620781 E-Mail: [laser635@virgilio.it](mailto:laser635@virgilio.it)

# **PCB VIBRATION ANALYSIS**

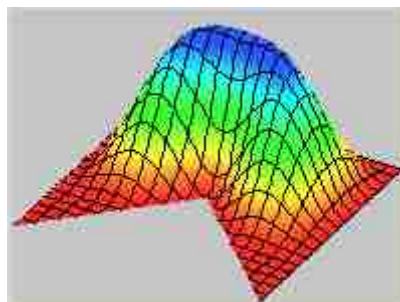
**MODAL ANALYSIS**

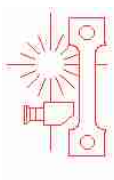
**for:**

**COMANDO Z6400- VERSIONE FER.**

**COD.: - - - -**

Revision \_\_\_\_\_





**aquaplan**

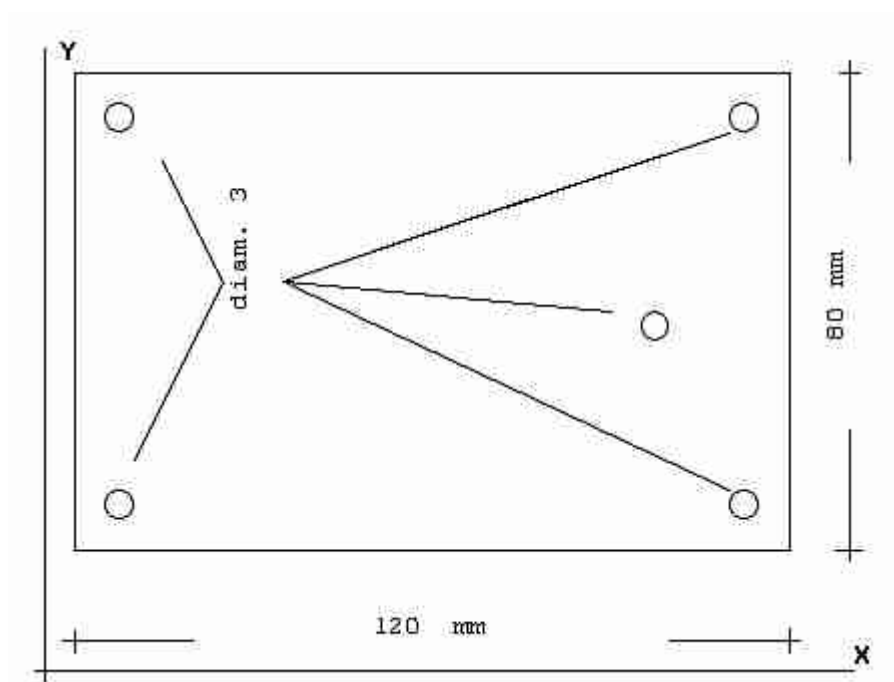
CLIENTE:XXXXXXX

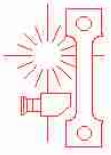
DATA:NOVEMBRE 2006

PROGETTO N°:-----

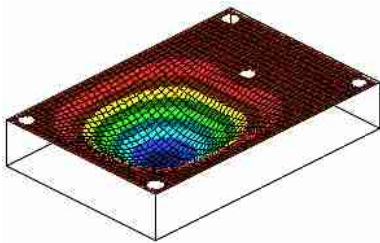
TITOLO: **Pannello comando Z6400 – Versione FER**

**DIMENSIONI MECCANICHE PCB**



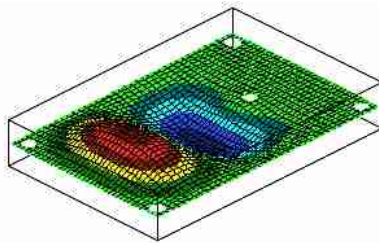


aquaplan



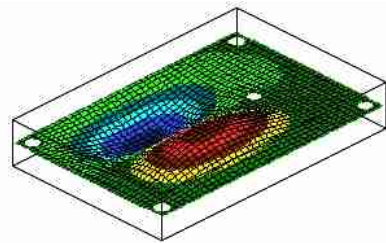
-0.29276E+02      0.13035E+00

Natural vibration mode 1 (445.6 Hz)



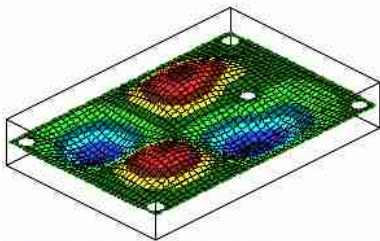
-0.25692E+02      0.27626E+02

Natural vibration mode 2 (843.2 Hz)



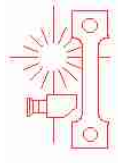
-0.26756E+02      0.26612E+02

Natural vibration mode 3 (946.1 Hz)

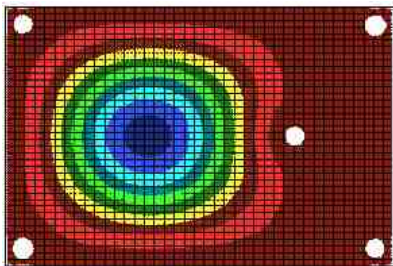


-0.25664E+02      0.24746E+02

Natural vibration mode 4 (1276.2 Hz)

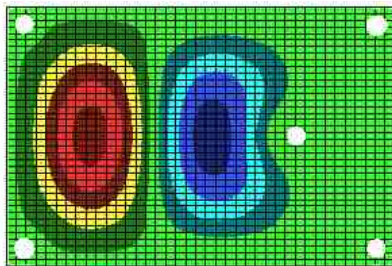


aquaplan



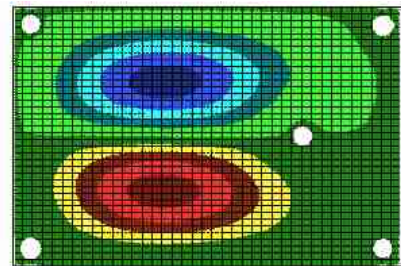
-0.29276E+02      0.13035E+00

Natural vibration mode 1 (445.6 Hz)



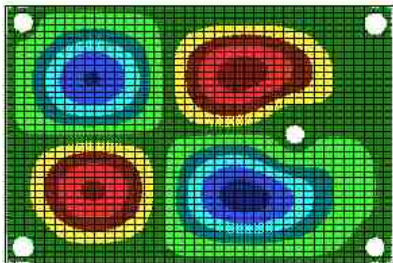
-0.25692E+02      0.27626E+02

Natural vibration mode 2 (843.2 Hz)



-0.26756E+02      0.26612E+02

Natural vibration mode 3 (946.1 Hz)



-0.25664E+02      0.24746E+02

Natural vibration mode 4 (1276.2 Hz)